

John Wingate  
and  
Four Generations

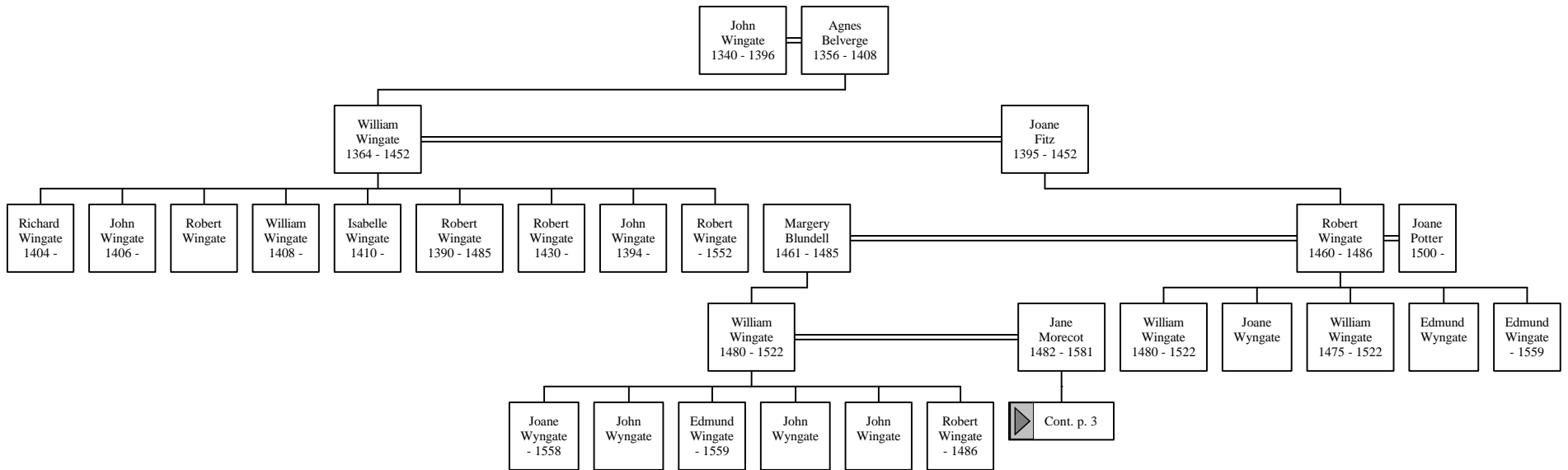
by

Brenda Winget

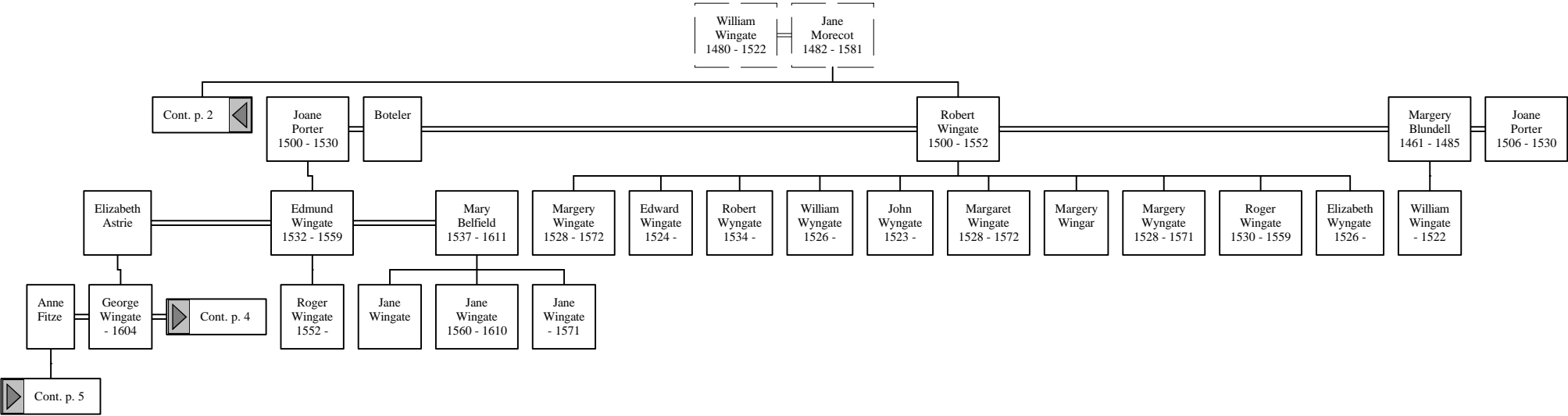
*Table of Contents*

Descendant Tree of John Wingate .....2  
Register Report of John Wingate.....12  
Ancestor Tree of John Wingate .....14  
Index .....15

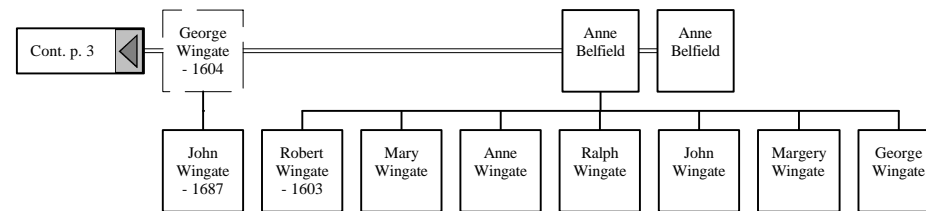
## *Descendants of John Wingate*



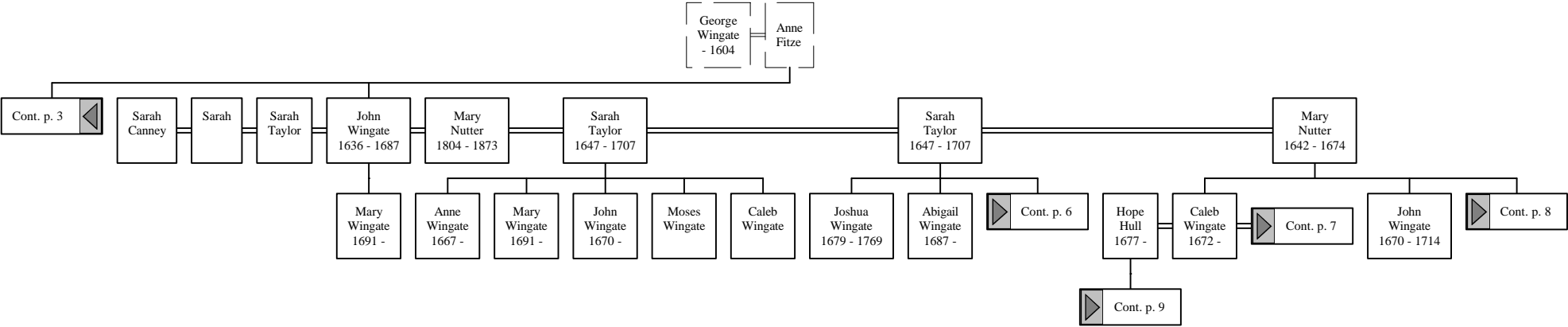
*Descendants of John Wingate*



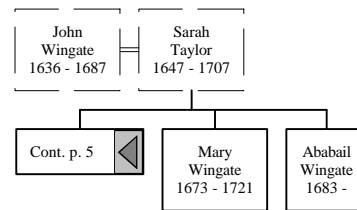
## *Descendants of John Wingate*



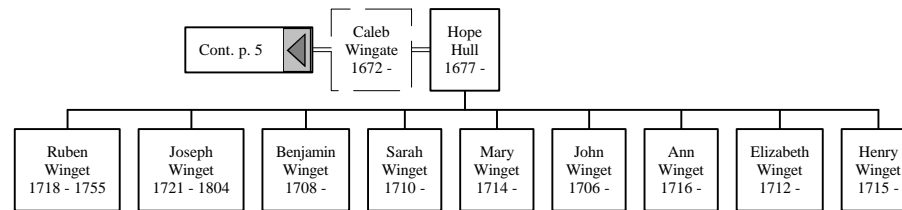
*Descendants of John Wingate*



## *Descendants of John Wingate*

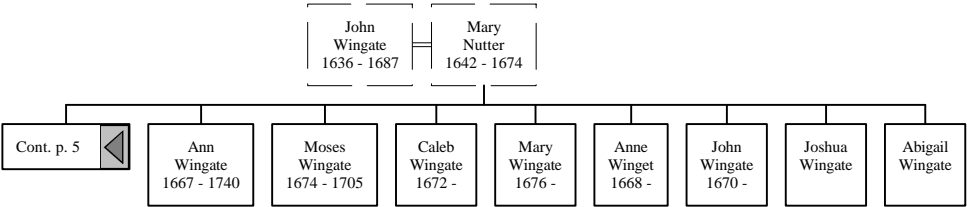


## *Descendants of John Wingate*

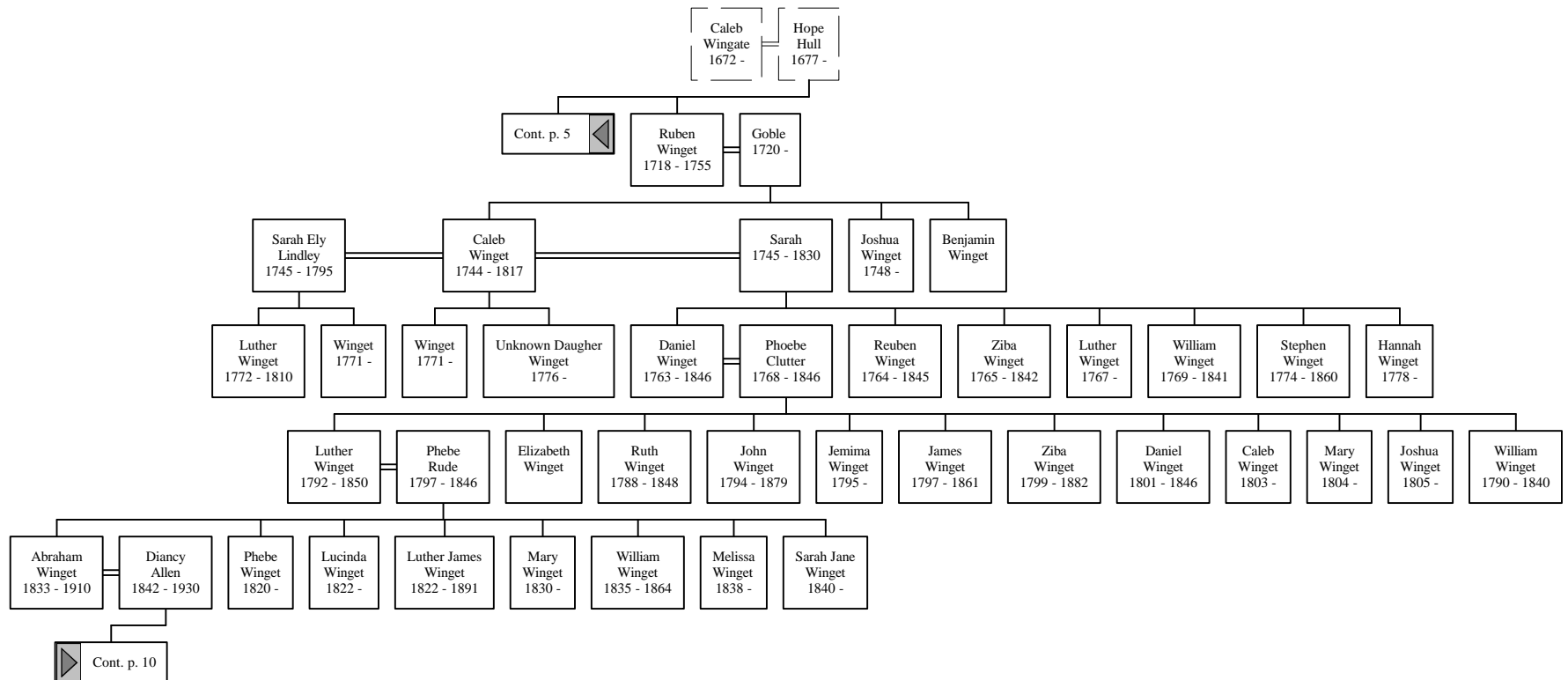




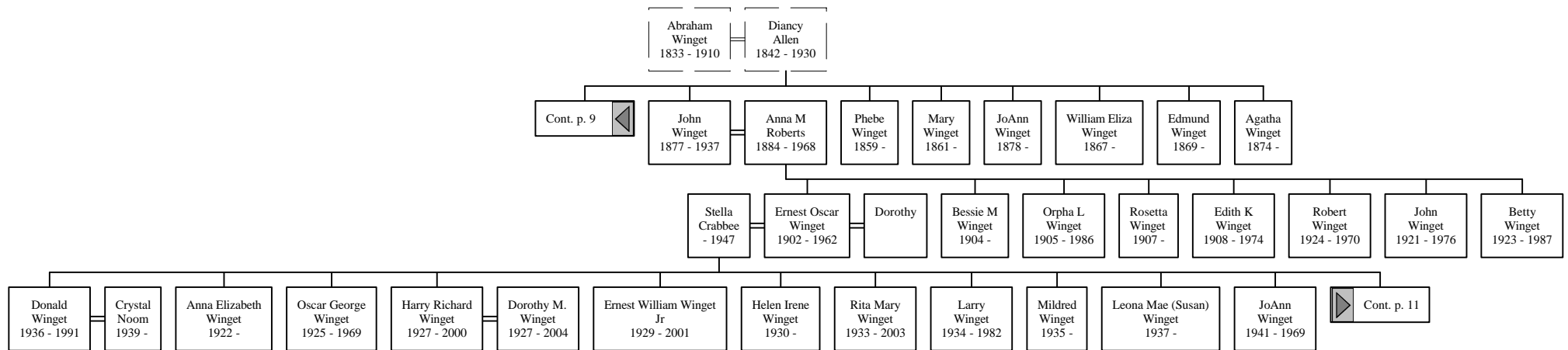
*Descendants of John Wingate*



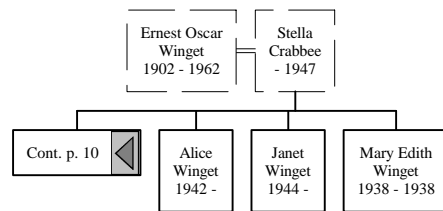
## *Descendants of John Wingate*



## *Descendants of John Wingate*



## *Descendants of John Wingate*



## *Descendants of John Wingate*

### *Generation No. 1*

1. JOHN<sup>1</sup> WINGATE<sup>1</sup> was born 1340 in Ellebrough, Buckinghamshire, England<sup>1</sup>, and died 1396 in Groue Manor, Ellesborough, Bedfordshire, England<sup>1</sup>. He married AGNES BELVERGE<sup>1</sup>. She was born 1356 in London, Middlesex, England<sup>1</sup>, and died 1408 in Streatley, Bedfordshire, England<sup>1</sup>.

Child of JOHN WINGATE and AGNES BELVERGE is:

2. i. WILLIAM<sup>2</sup> WINGATE, b. 1364, Sharpenhoe, Ampthill, Bedfordshire, England; d. 1452, Stretley Church, Sharpenhoe, Bedfordshire, England.

### *Generation No. 2*

2. WILLIAM<sup>2</sup> WINGATE (JOHN<sup>1</sup>)<sup>1,1</sup> was born 1364 in Sharpenhoe, Ampthill, Bedfordshire, England<sup>1,1</sup>, and died 1452 in Stretley Church, Sharpenhoe, Bedfordshire, England<sup>1,1</sup>. He married (1) JOANE FITZ<sup>1</sup>. She was born 1395 in Sharpenhoe, Bedfordshire, England<sup>1</sup>, and died 1452 in Streatley Church, Bedfordshire, England<sup>1</sup>.

Child of WILLIAM WINGATE and JOANE FITZ is:

3. i. ROBERT<sup>3</sup> WINGATE, b. 1460, Sharpenhoe, Ampthill, Bedfordshire, England; d. 1486, Stretely, Bedfordshire, England.

Children of WILLIAM WINGATE are:

- ii. RICHARD<sup>3</sup> WINGATE<sup>1</sup>, b. 1404, Hartington, Derbyshire, England<sup>1</sup>.
- iii. JOHN WINGATE<sup>1</sup>, b. 1406, Hartington, Derbyshire, England<sup>1</sup>.
- iv. ROBERT WINGATE<sup>1,1</sup>.
- v. WILLIAM WINGATE<sup>1</sup>, b. 1408, Hartington, Derbyshire, England<sup>1</sup>.
- vi. ISABELLE WINGATE<sup>1</sup>, b. 1410, Hartington, Derbyshire, England<sup>1</sup>.
- vii. ROBERT WINGATE<sup>1</sup>, b. 1390, Harlington, Bedfordshire, England<sup>1</sup>; d. 1485, Harlington, Bedfordshire, England<sup>1</sup>.
- viii. ROBERT WINGATE<sup>1</sup>, b. 1430<sup>1</sup>.
- ix. JOHN WINGATE<sup>1</sup>, b. 1394, Hartington, Derby, England<sup>1</sup>.
- x. ROBERT WINGATE<sup>1,1</sup>, d. 1552, Streatly Church, Sharpenhoe, Bedfordshire, England<sup>1</sup>.

### *Generation No. 3*

3. ROBERT<sup>3</sup> WINGATE (WILLIAM<sup>2</sup>, JOHN<sup>1</sup>)<sup>1,1</sup> was born 1460 in Sharpenhoe, Ampthill, Bedfordshire, England<sup>1,1</sup>, and died 1486 in Stretely, Bedfordshire, England<sup>1,1</sup>. He married (1) MARGERY BLUNDELL<sup>1</sup>. She was born 1461 in Harlington, Bedfordshire, England<sup>1</sup>, and died 1485 in Streatley, Bedfordshire, England<sup>1</sup>. He married (3) JOANE POTTER<sup>1</sup>. She was born 1500 in England<sup>1</sup>.

Child of ROBERT WINGATE and MARGERY BLUNDELL is:

4. i. WILLIAM<sup>4</sup> WINGATE, b. 1480, Sharpenhoe, Ampthill, Bedfordshire, England; d. 1522, Sharpenhoe, Bedfordshire, England.

Children of ROBERT WINGATE are:

- ii. WILLIAM<sup>4</sup> WINGATE<sup>1</sup>, b. 1480, Sharpenhoe, Ampthill, Bedfordshire, England<sup>1</sup>; d. 1522, Sharpenhoe, Bedfordshire, England<sup>1</sup>.
- iii. JOANE WYNGATE<sup>1</sup>.
- iv. WILLIAM WINGATE<sup>1</sup>, b. 1475<sup>1</sup>; d. 1522<sup>1</sup>.
- v. EDMUND WYNGATE<sup>1</sup>.
- vi. EDMUND WINGATE<sup>1,1</sup>, d. 1559, Sharpenhoe, Ampthill, Cobedford, England<sup>1</sup>.

*Generation No. 4*

4. WILLIAM<sup>4</sup> WINGATE (*ROBERT*<sup>3</sup>, *WILLIAM*<sup>2</sup>, *JOHN*<sup>1</sup>)<sup>I,I</sup> was born 1480 in Sharpenhoe, Ampthill, Bedfordshire, England<sup>I,I</sup>, and died 1522 in Sharpenhoe, Bedfordshire, England<sup>I,I</sup>. He married (1) JANE MORECOT<sup>I</sup>. She was born 1482 in Sharpenhoe, Ampthill, Bedfordshire, England<sup>I</sup>, and died 1581 in England<sup>I</sup>.

Child of WILLIAM WINGATE and JANE MORECOT is:

- i. ROBERT<sup>5</sup> WINGATE<sup>I,I</sup>, b. 1500, Sharpenhoe, Streatley, Bedfordshire, England<sup>I,I</sup>; d. 1552, Streatly Church, Sharpenhow, Bedfordshire, England<sup>I,I</sup>; m. (1) JOANE PORTER<sup>I</sup>; b. 1500, Sharpenhoe, Streatley, Bedfordshire, England<sup>I</sup>; d. 1530, Sharpenhoe, Bedfordshire, England<sup>I</sup>; m. (3) BOTELER<sup>I</sup>; m. (4) MARGERY BLUNDELL<sup>I</sup>; b. 1461, Harlington, Bedfordshire, England<sup>I</sup>; d. 1485, Streatley, Bedfordshire, England<sup>I</sup>; m. (5) JOANE PORTER<sup>I</sup>, 1527, Sharpenow, Bedfordshire, England<sup>I</sup>; b. 1506, Barton, Hartshorne, Buckinghamshire, England<sup>I</sup>; d. 1530, Sharpenhow, Bedfordshire, England<sup>I</sup>.

Children of WILLIAM WINGATE are:

- ii. JOANE<sup>5</sup> WYNGATE<sup>I</sup>, d. 1558, Harlington, Bedfordshire, England<sup>I</sup>.
- iii. JOHN WYNGATE<sup>I</sup>.
- iv. EDMUND WINGATE<sup>I,I</sup>, d. 1559, Sharpenhoe, Ampthill, Cobedford, England<sup>I</sup>.
- v. JOHN WYNGATE<sup>I</sup>.
- vi. JOHN WINGATE<sup>I</sup>.
- vii. ROBERT WINGATE<sup>I,I</sup>, d. 1486, Stretely, Bedfordshire, England<sup>I</sup>.

*Endnotes*

1. Ancestry.com, One World Tree (sm), Provo, UT, USA: MyFamily.com, Inc., n.d., Online publication - Ancestry.com. OneWorldTree [database on-line]. Provo, UT, USA: MyFamily.com, Inc.

*Ancestors of John Wingate*

**John Wingate**

b: 1340 in Ellebrough, Buckinghamshire, England  
d: 1396 in Groue Manor, Ellesborough,  
Bedfordshire, England

## *Index of Individuals*

<i>Allen</i> -	Margery: 3
Diancy: 9	<i>Wingate</i> -
<i>Astrie</i> -	Ababail: 6
Elizabeth: 3	Abigail: 8
<i>Belfield</i> -	Abigail: 5
Anne: 4	Ann: 8
Anne: 4	Anne: 4
Mary: 3	Anne: 5
<i>Belverge</i> -	Caleb: 5
Agnes: 2, 12	Caleb: 5
<i>Blundell</i> -	Caleb: 8
Margery: 3, 13	Edmund: 2, 13
Margery: 2, 12	Edmund: 2, 12
<i>Boteler</i> -	Edmund: 3
Unnamed: 3, 13	Edward: 3
<i>Canney</i> -	George: 3
Sarah: 5	George: 4
<i>Clutter</i> -	Isabelle: 2, 12
Phoebe: 9	Jane: 3
<i>Crabbee</i> -	Jane: 3
Stella: 10	Jane: 3
<i>Dorothy</i> -	John: 4
Unnamed: 10	John: 4
<i>Fitz</i> -	John: 2, 13
Joane: 2, 12	John: 2, 12-14
<i>Fitze</i> -	John: 2, 12
Anne: 3	John: 2, 12
<i>Goble</i> -	John: 5
Unnamed: 9	John: 8
<i>Hull</i> -	John: 5
Hope: 5	John: 5
Hope: 7	Joshua: 8
<i>Jr</i> -	Joshua: 5
Ernest William Winget: 10	Margaret: 3
<i>Lindley</i> -	Margery: 4
Sarah Ely: 9	Margery: 3
<i>Morecot</i> -	Mary: 4
Jane: 2, 13	Mary: 6
<i>Noom</i> -	Mary: 8
Crystal: 10	Mary: 5
<i>Nutter</i> -	Mary: 5
Mary: 5	Moses: 5
Mary: 5	Moses: 8
<i>Porter</i> -	Ralph: 4
Joane: 3, 13	Richard: 2, 12
Joane: 3, 13	Robert: 4
<i>Potter</i> -	Robert: 2, 13
Joane: 2, 12	Robert: 2, 12
<i>Roberts</i> -	Robert: 2, 12
Anna M: 10	Robert: 2, 12
<i>Rude</i> -	Robert: 2, 12
Phebe: 9	Robert: 2, 12, 13
<i>Sarah</i> -	Robert: 3, 13
Unnamed: 5	Roger: 3
Unnamed: 9	Roger: 3
<i>Taylor</i> -	William: 3
Sarah: 5	William: 2, 12, 13
Sarah: 5	William: 2, 12
Sarah: 5	William: 2, 12
<i>Wingar</i> -	William: 2, 12, 13
	William: 2, 12
	<i>Winget</i> -
	Unnamed: 9



Unnamed: 9  
 Abraham: 9  
 Agatha: 10  
 Alice: 11  
 Ann: 7  
 Anna Elizabeth: 10  
 Anne: 8  
 Benjamin: 9  
 Benjamin: 7  
 Bessie M: 10  
 Betty: 10  
 Caleb: 9  
 Caleb: 9  
 Daniel: 9  
 Daniel: 9  
 Donald: 10  
 Dorothy M.: 10  
 Edith K: 10  
 Edmund: 10  
 Elizabeth: 9  
 Elizabeth: 7  
 Ernest Oscar: 10  
 Hannah: 9  
 Harry Richard: 10  
 Helen Irene: 10  
 Henry: 7  
 James: 9  
 Janet: 11  
 Jemima: 9  
 JoAnn: 10  
 JoAnn: 10  
 John: 7  
 John: 9  
 John: 10  
 John: 10  
 Joseph: 7  
 Joshua: 9  
 Joshua: 9  
 Larry: 10  
 Leona Mae (Susan): 10  
 Lucinda: 9  
 Luther: 9  
 Luther: 9  
 Luther: 9  
 Luther James: 9  
 Mary: 7  
 Mary: 9  
 Mary: 9  
 Mary: 10  
 Mary Edith: 11  
 Melissa: 9  
 Mildred: 10  
 Orpha L: 10  
 Oscar George: 10  
 Phebe: 9  
 Phebe: 10  
 Reuben: 9  
 Rita Mary: 10  
 Robert: 10  
 Rosetta: 10  
 Ruben: 9  
 Ruben: 7  
 Ruth: 9  
 Sarah: 7  
 Sarah Jane: 9

Stephen: 9  
 Unknown Daugher: 9  
 William: 9  
 William: 9  
 William: 9  
 William Eliza: 10  
 Ziba: 9  
 Ziba: 9  
*Wyngate* -  
 Edmund: 2, 12  
 Elizabeth: 3  
 Joane: 2, 13  
 Joane: 2, 12  
 John: 2, 13  
 John: 2, 13  
 John: 3  
 Margery: 3  
 Robert: 3  
 William: 3